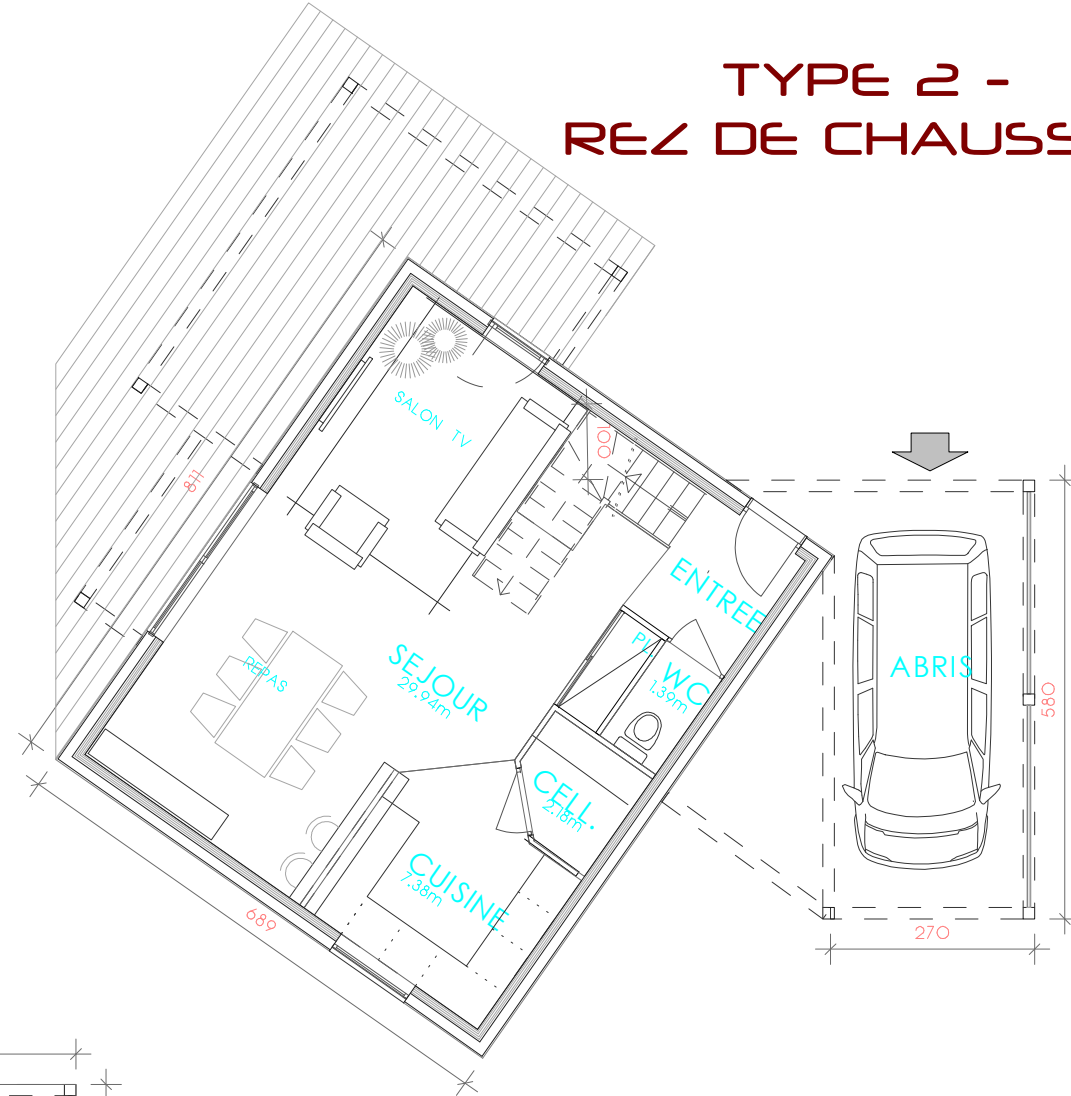
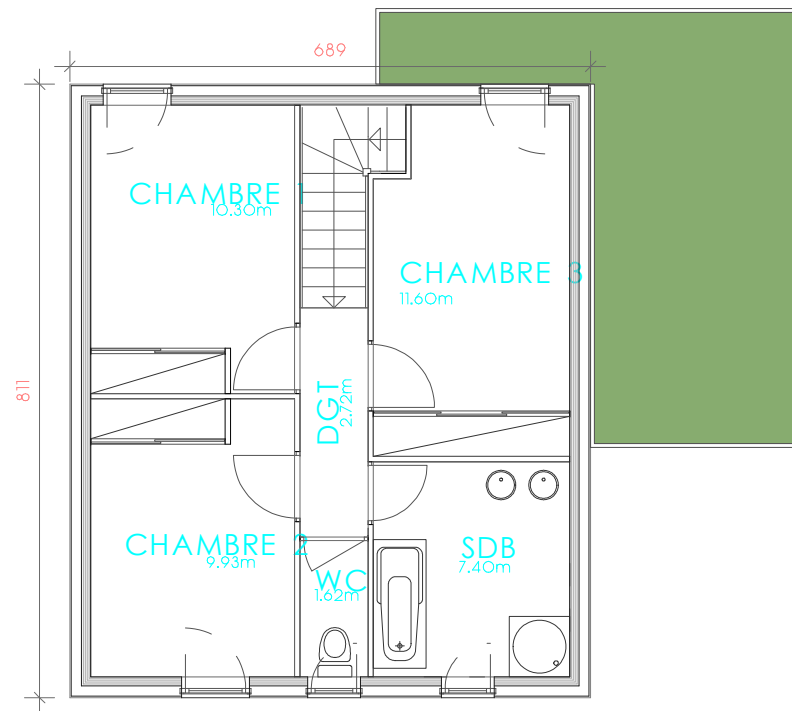
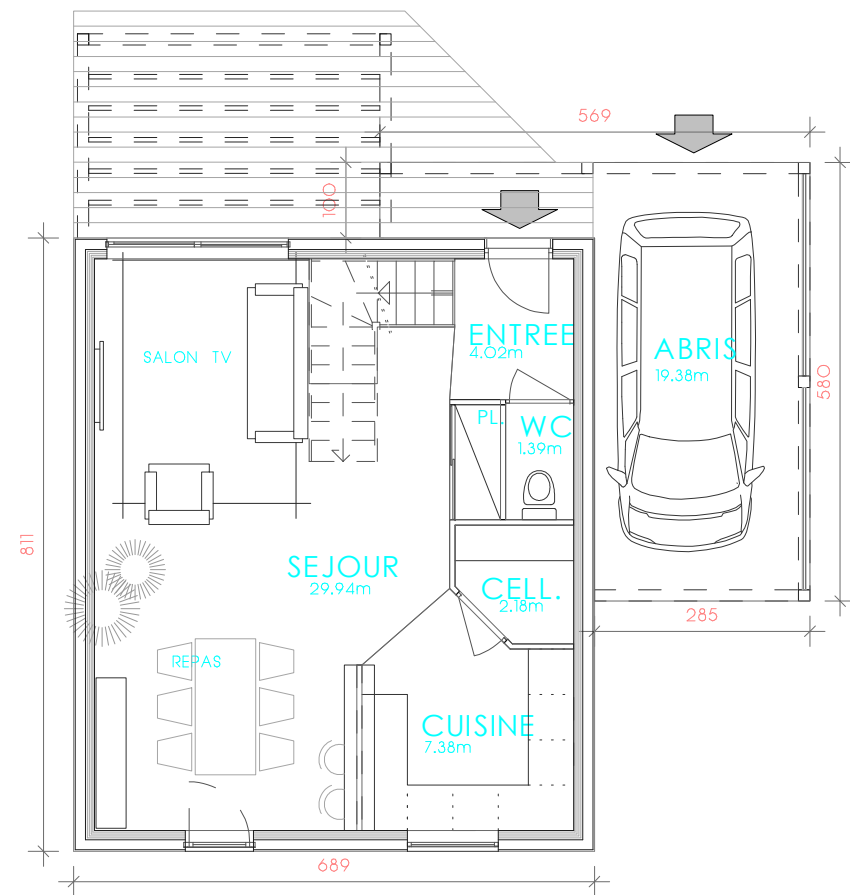
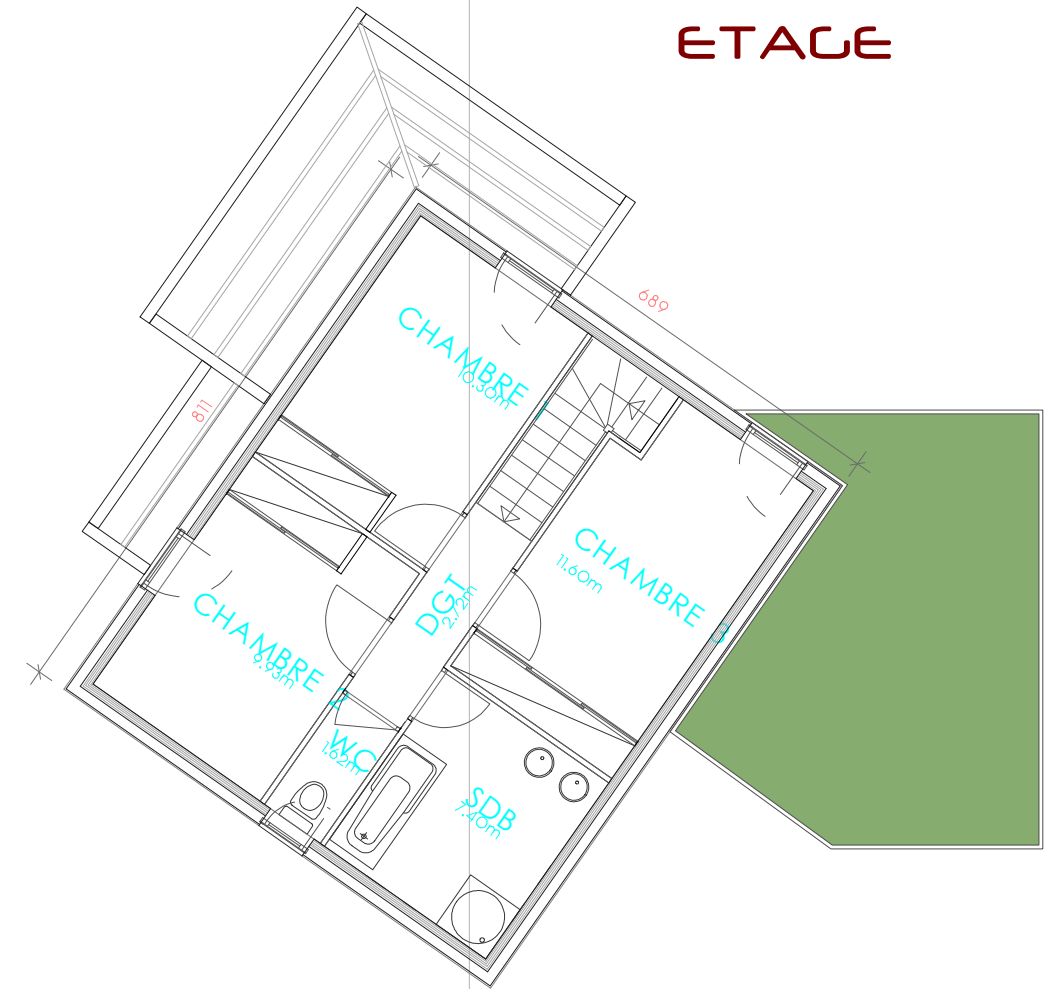


**TYPE 2 -  
REZ DE CHAUSSEE**



**TYPE 2 -  
ETAGE**



**TYPE 1 - REZ DE CHAUSSEE**

**TYPE 1 - ETAGE**

**PLAN MAISONS - Ech 1:100e**

**ETUDE DE FAISABILITE  
Construction de maisons d'habitation  
42360 COTTANCE**

le 26.04.2016



Sylvain GIRAUDIER Architecte  
3 Place Félix Nigay  
42110 FEURS